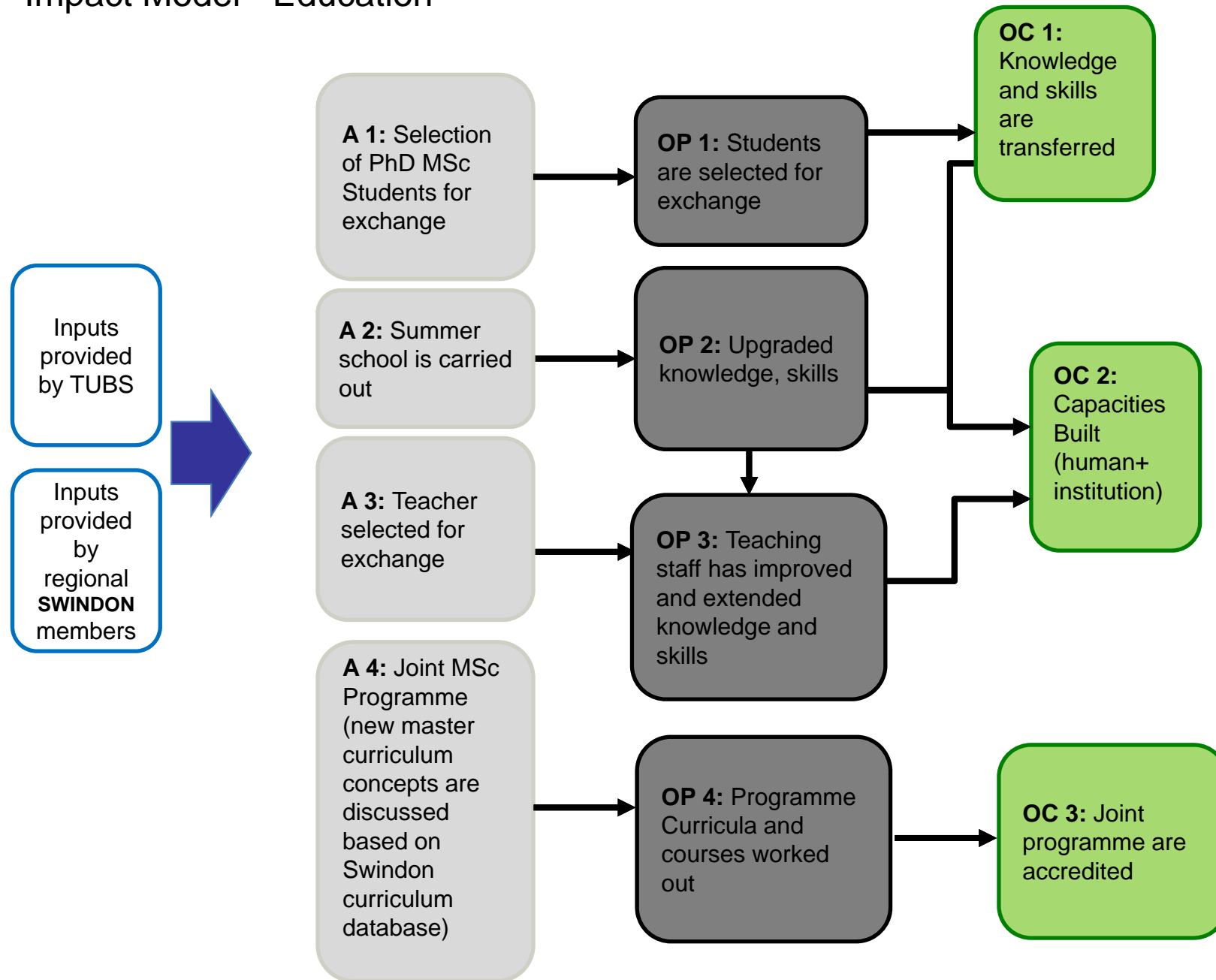


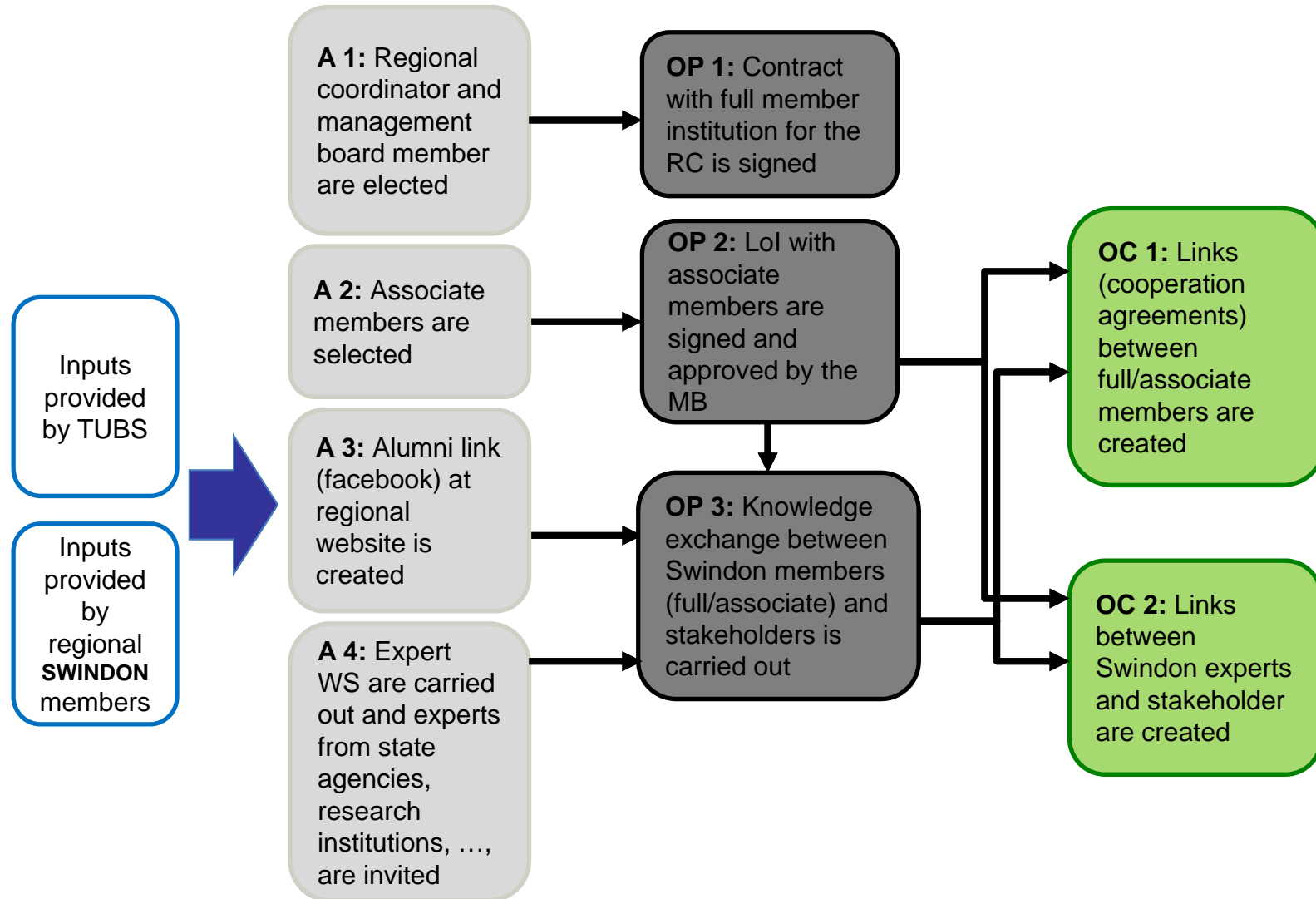
# Impact Model - Education



## Indicators - Education

Level of Impact Model - Education	Indicator	S	M	A	R	T
<b>A1:</b> Selection of PhD MSc Students for exchange	Student exchange announced to the network according to annual mobility planning	X	X	X	X	X
<b>OP 1:</b> Students are selected for exchange	Min. of 5 exchange students selected each year (2015, -16, -17, -18, -19); gender ratio (>30%)	X	X	X	X	X
<b>OC1:</b> Knowledge and skills are transferred	Knowledge (related to water) gained is incorporated in courses of existing curricula; number of courses with incorporation of gained knowledge > 3 at each SEA full member institution till 2019	X	X	X	X	X
<b>A2:</b> Summer school is carried out	SS programme announced and advertised on website, event flyer prepared and published	X	X	X	X	X
<b>OP2:</b> Knowledge and skills are upgraded	Min. of one summer school till 2019 Total number of applications received Return rate of feedback according to questionnaire >60 %	X X X	X X X	X X X	X X X	X X X
<b>OC2:</b> Capacities Built (human+ institution)	Improvement in curricula related to water (new courses); min.3 at each SEA full member institution till 2019	X	X	X	X	X
<b>A3:</b> Teaching staff selected for exchange	Participation of teaching staff in teacher exchange	X	X	X	X	X
<b>OP3:</b> Teaching staff has improved and extended knowledge and skills	1- 2 teacher exchanges per year till 2019 Min. of 8 h per week for 4 weeks per year (or 2 persons for 2 weeks)	X X X	X X X	X X X	X X X	X X X
<b>A4:</b> Joint MSc programme (new master curriculum concepts are discussed based on Swindon curriculum database)	JRP is advertised	X	X	X	X	X
<b>OP4:</b> Joint Programme Curricula and courses are worked out	Each year one JRP is submitted to the MB	X	X	X	X	X
<b>OC3:</b> Joint programme is accredited	Min. of 1 joint programme is accredited	X	X	X	X	X

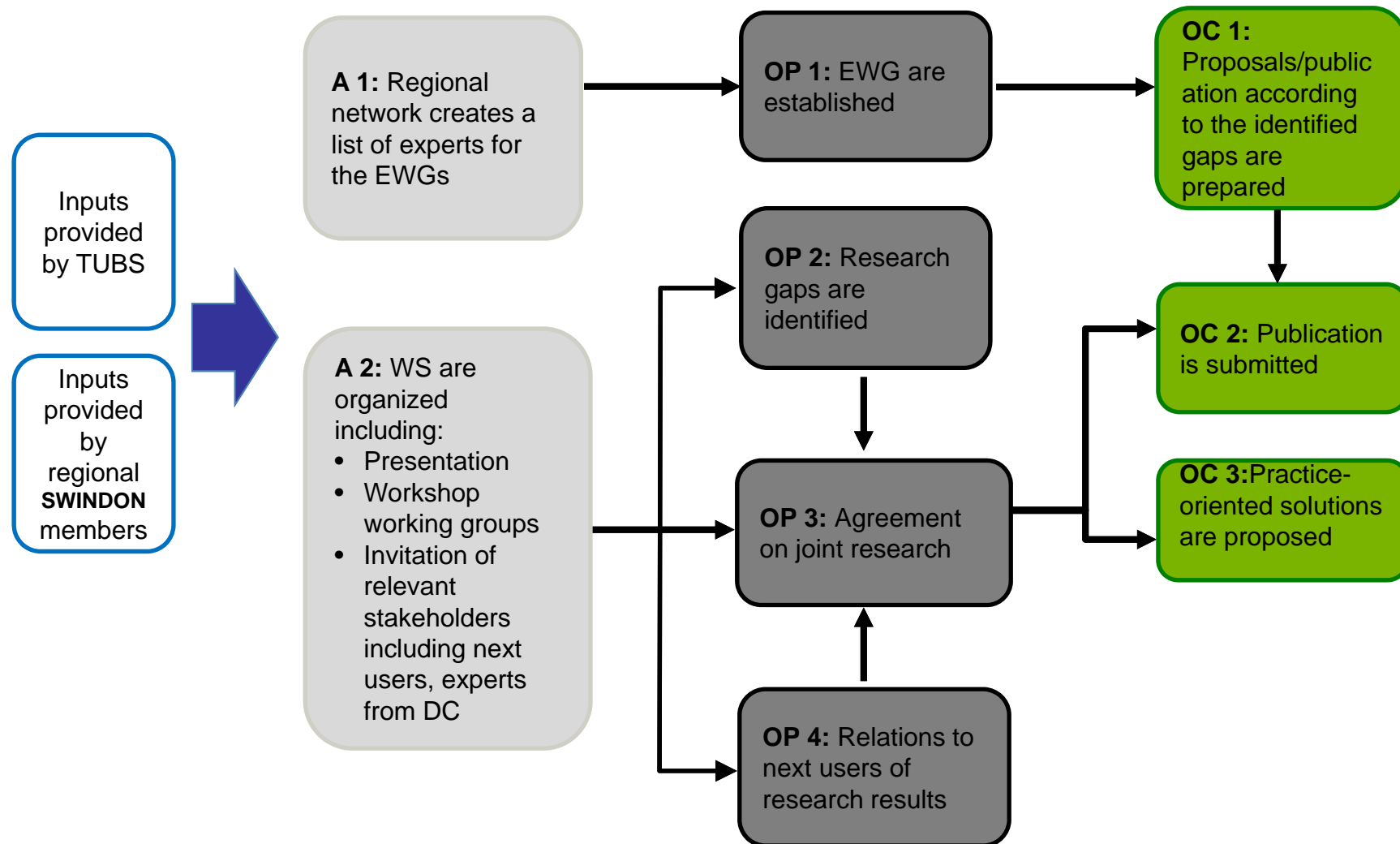
# Impact Model - Network



## Indicators - Network

Level of Impact Model - Network	Project-specific indicator	S	M	A	R	T
<b>A 1:</b> Regional coordinator and management board member are elected	One regional coordinator and one management board member are selected who are responsible for regional network from 2015-2016; from 2017-2018, from 2018-2019.	X	X	X	X	X
<b>OP 1:</b> Lol with full member institutions and contract for the RC are signed	Lols with all regional full members are signed; contract is signed for RC.	X	X	X	X	X
<b>A 2:</b> Associate members are selected	> 1 associate member is selected by SEA full member institutions	X	X	X	X	X
<b>OP2:</b> Lol with associate members are signed and approved by the MB	> 1 Lol with associate member is signed and approved by the MB for the SEA region.	X	X	X	X	X
<b>A 3:</b> Alumni link (facebook) at regional website is created	Facebook and LinkedIn are created for the Alumni link. All SEA members should register and connect to the link.	X	X	X	X	X
<b>A 4:</b> Expert WS are carried out and experts from state agencies, research institutions, ..., are invited	One WS with experts is carried out each year. Participants cover min. 6 full member institutions and min. 6 associate member institutions. At least one participant from state agency, one from research institution, and one from NGO is participating	X	X	X	X	X
<b>OP 3:</b> Knowledge exchange between Swindon members (full/associate) and stakeholders is carried out	At least one roundtable meeting should be held between SEA members (full/associate) and stakeholders each year during the WS.	X	X	X	X	X
<b>OC 1:</b> Links (cooperation agreements) between full/associate members are created	At least one link (cooperation agreement) between full/associate members is created in SEA region each year.	X	X	X	X	X
<b>OC 2:</b> Links between Swindon experts and stakeholder are created	At least one link (> 5) between Swindon experts (all regions) is documented.	X	X	X	X	X

# Impact Model - Research



## Indicators - Research

Level of Impact Model - Research	Project-specific indicator	S	M	A	R	T
<b>A 1:</b> Regional network creates a list of experts for the WGs	The list of EWG is done till the end of 2015	X	X	X	X	X
<b>OP 1:</b> EWG are established	Number of working groups established Minimum of 2 working groups required for each WS	X	X	X	X	X
<b>A 2:</b> WS are organized including: <ul style="list-style-type: none"> <li>• Presentation</li> <li>• Workshop working groups</li> <li>• Invitation of relevant stakeholders including next users, experts from DC</li> </ul>	Presentations are given and workshop working groups are built	X	X	X	X	X
<b>OP 2:</b> Workshop working groups are built and identify research gaps related to water problems	Reports about the gaps are available (written by the workshop working groups) At least one of the categories, societal, academic or practice-oriented are covered	X	X	X	X	X
<b>OP 3:</b> Agreement on joint research	Min. of 1 of agreement made between partners and others each year	X	X	X	X	X
<b>OP 4:</b> Relations to next users of research results	Number of event attending next users Contribution (finance/friend) by next users	X	X	X	X	X
<b>OC 1:</b> Proposal/publication according to the identified gaps	Min. 2 of proposals/publications prepared each year	X	X	X	X	X
<b>OC 2:</b> Publication is submitted	Min. of 1 of joint publication submission each year	X	X	X	X	X
<b>OC 3:</b> Practice-oriented solutions are proposed	Min. 2 proposals each year	X	X	X	X	X